



Web of Science Kullanıcı Hesabı- Researcher ID Oluşturma, Researcher ID'ye Yayın Tanımlama ve PUBLONS Profili

A) Web of Science Kullanıcı Hesabı Oluşturma:

1.Adım: <https://webofknowledge.com/> adresine gidiniz. Daha önceden Web of Science şifresi alıp unutmuş iseniz “**Sign In - Forgot Password**” tıklayınız. Hangi mail adresinizle kayıt yaptıysanız aynı mail adresinizi giriniz ve e-postanıza gelen doğrulama koduyla hesabınızı aktifleştiriniz. Hesabınızı aktif kullanıyorsanız e-posta ve şifreniz ile giriş yapabilirsiniz.

Web of Science Sign In page. The 'Sign In' button is highlighted in red. Below it, the 'Forgot Password' link is also highlighted in red. The page shows the 'Sign In' form with fields for 'E-mail Address' and 'Password', and a 'Sign In' button. To the right, there is a list of benefits for registered users.

Reset your password page. It features an 'Email address' input field, a 'Send verification email' button, and a 'Problems resetting your password?' link. The page also includes a footer with '© 2020 Clarivate Analytics | Terms of Use | Privacy Policy'.



Batman Üniversitesi
Kütüphane ve Dokümantasyon Daire Başkanlığı

2.Adım: Yeni kayıt yapıyorsanız Sign In – Register tıklayınız. Aktif olarak kullandığımız eposta adresinizi giriniz.

3.Adım: e-posta adresinize gelen doğrulama kodunu giriniz ve “Continue” butonuna tıklayınız.



Batman Üniversitesi
Kütüphane ve Dokümantasyon Daire Başkanlığı

4.Adım: Formdaki bilgileri doldurunuz ve şifrenizi not ediniz. “Submit changes” tıklayınız

Registration

* E-mail Address: [REDACTED]

* First Name: [Text Box]

* Last Name: [Text Box]

Middle Initial: [Text Box] (optional)

* Password: [Text Box]

Password Guidelines
Must be 8 or more characters (no spaces) and contain:
- at least 1 numeral: 0 - 9
- at least 1 alpha character, case-sensitive
- at least 1 symbol: ! @ # \$ % ^ * () ~ ` { } | & _
Example: 1sun%moon

* Retype New Password: [Text Box]

* Primary Role: [Dropdown Menu]

* Subject Area: [Dropdown Menu]

Bibliographic Software Used: [Dropdown Menu]

* Opt In/Opt Out:
 Receive training materials, notifications, announcements, and other materials by e-mail.
 Do not receive training materials, notifications, announcements, and other materials by e-mail.

Automatic Sign In:
 Sign me in automatically.
 (Select this if you want to be signed in automatically each time you access Web of Science. This feature uses cookie technology.)
 I am using a public computer or do not wish to be signed in automatically (Users of public computers should select this option.)

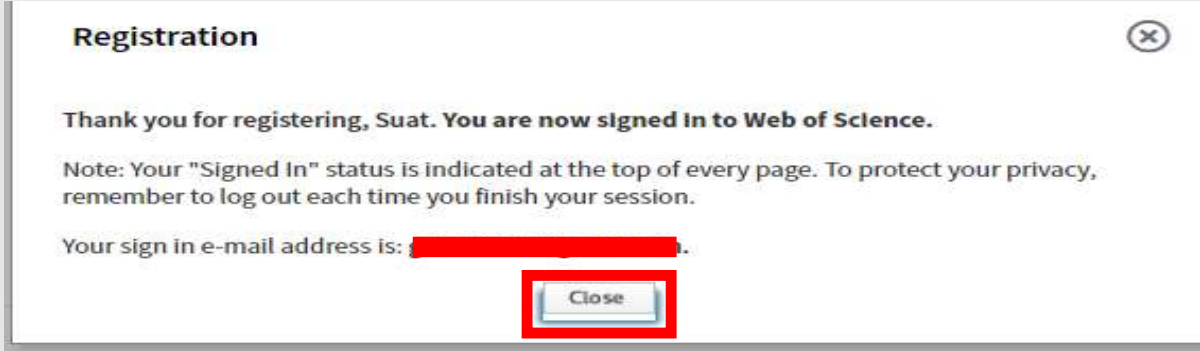
* Terms and Conditions:
WEB OF SCIENCE TERMS OF USE: You are entitled to access the product, download or extract reasonable amounts of data from the product that are required for the activities you carry out individually or as part of your employment, and include insubstantial portions of extracted data in your work documents and reports, provided that such documents or reports are for the benefit of (and belong to) your organization, or where such documents or reports are intended for the benefit of third parties (not your organization), extracted data is immaterial in the context of such documents or reports and used only for illustrative/demo purposes.
Clarivate Analytics determines a "reasonable amount" of data to download by comparing
 I have read and agree to these terms and conditions.

Submit Changes | Cancel



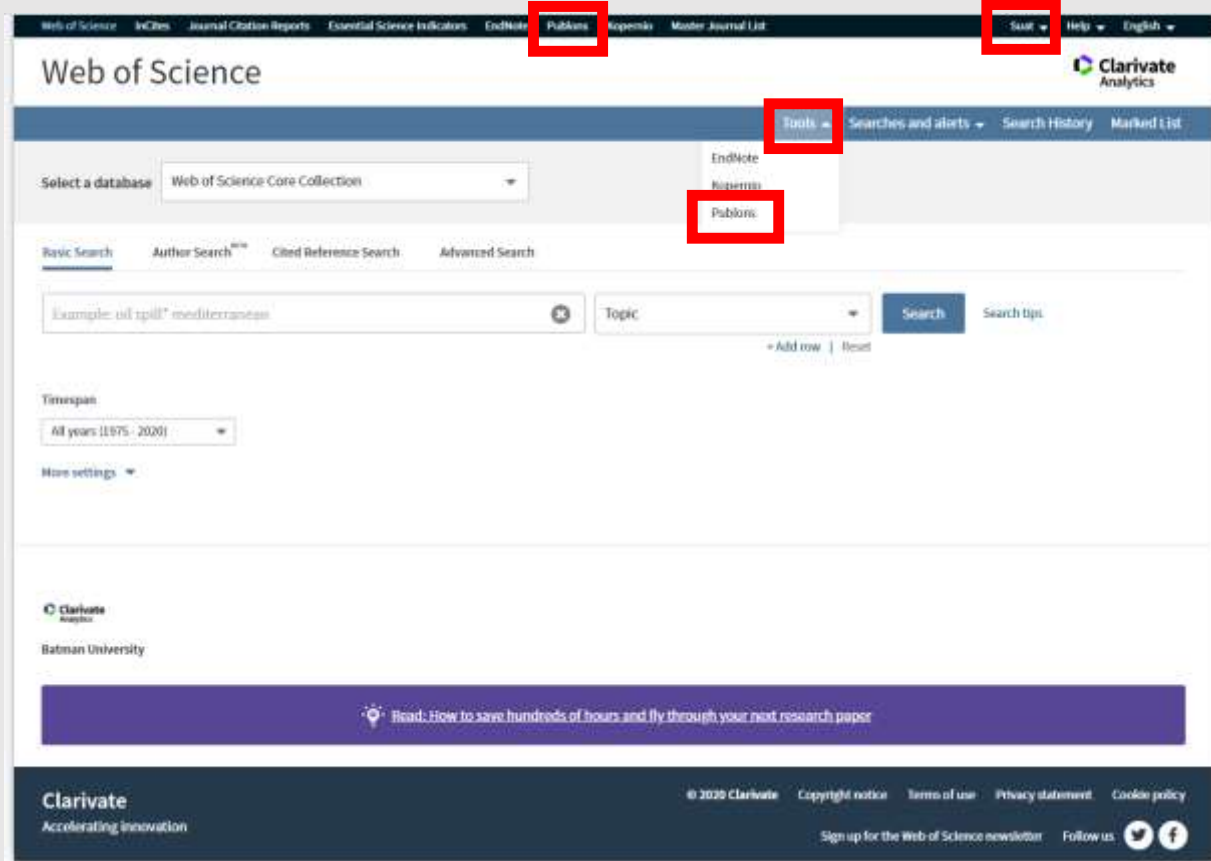
Batman Üniversitesi
Kütüphane ve Dokümantasyon Daire Başkanlığı

5.Adım: Web of Science kullanıcı hesabınız oluşturulmuştur

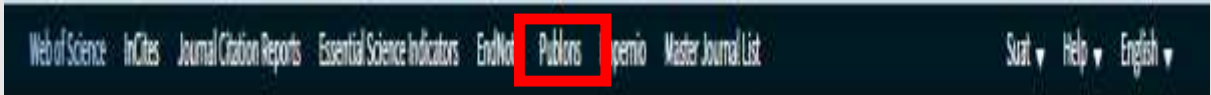


B) Researcher ID Oluşturma, Yayın Tanımlama ve PUBLONS Profili

6.Adım: WOS'ta aktif kullanıcı olarak tanımlandığınızı (adınızı) sağ üst köşede görebilirsiniz. Tools altında veya üstteki siyah çubukta yer alan **Publons**'a tıklayınız.



Publon'u ilk defa kullanacak olan araştırmacılarımıza Web of Science giriş e-posta ve şifreleriyle LOG IN yapmaları önerilir. WOS ana sayfasında üstteki siyah çubukta yer alan bütün platformlar Web of Science giriş e-posta ve şifreleriyle kullanılabilir. Ayrıca e-posta ve şifre tanımlamaya gerek yoktur.





Batman Üniversitesi
Kütüphane ve Dokümantasyon Daire Başkanlığı

7. Adım: Publons ana sayfasında yeni kayıt yapmak yerine **LOG IN**'i tıklayarak WOS e-posta ve şifrenizle giriş yapabilirsiniz.

publons BROWSE COMMUNITY FAQ Q

LOG IN REGISTER WEB OF SCIENCE

Show your research impact

You can now sign in to Publons, EndNote, and Web of Science® with one email address and password.

If you previously had a ResearcherID account or already have an account with one of the above products, please sign in with your credentials for that service to start using Publons. [Learn more about registering for Publons here.](#)

Join over 2,600,000 researchers on Publons to track your publications, citation metrics, peer reviews, and journal editing work in a single, easy-to-maintain profile:

- **All your publications**, instantly imported from Web of Science, ORCID, or your bibliographic reference manager (e.g. EndNote or Mendeley)
- **Trusted citation metrics**, automatically imported from the Web of Science Core Collection
- **Your verified peer review and journal editing history**, powered by partnerships with thousands of scholarly journals
- **Publons CV** summarising your scholarly impact as an author, editor and peer reviewer
- **Support Open Science** by posting community reviews against papers and preprints, such as in our COVID-19 Index.

Register to continue with Publons

Email address

Password

8. Adım: Publons'a Web of Science hesabı ile giriş yapıldıktan sonra 4 adımda sistemin yeni özelliklerinin tanıtım adımları ekrana geliyor. **“Continue”** tıklayarak devam ediniz.

publons

Welcome to Publons! Learn how to show your true research impact

A private dashboard to manage your records and metrics

Integrations with *Web of Science*, ORCID, and academic journals make it easy to import all your **publications, citation metrics, peer reviews, and journal editing work** in one place.

Use your private dashboard to control what is visible on your public profile, and monitor the global impact of your work as an author, peer reviewer, and journal editor.

CONTINUE



Batman Üniversitesi
Kütüphane ve Dokümantasyon Daire Başkanlığı

8. Adım: Publons'a Web of Science hesabı ile giriş yapıldıktan sonra 4 adımda sistemin yeni özelliklerinin tanıtım adımları ekrana geliyor. “Continue” tıklayarak devam ediniz.

The screenshot shows the Publons website interface. At the top, there is a navigation bar with the 'publons' logo. Below it, a search bar contains the text 'Web of Science ResearcherID: V-9577-2018'. The main content area is titled 'your ResearcherID is now on Publons'. It includes a paragraph explaining that Publons is the new environment for managing the ResearcherID profile, and another paragraph encouraging the user to click 'continue' for a quick tour. A blue button labeled 'CONTINUE' is highlighted with a red rectangular box. To the right, there is a 'ResearcherID' summary box containing the following information:

ResearcherID	
Your ResearcherID	V-9577-2018
Number of publications	13
Web of Science - times cited	154
Most recent publication	<i>The impact of internet use on air pollution: Evidence from emerging countries, 2018</i>

9. Adım: Son adımda Kontrol paneline (profile) gitmek için “Take Me To My Dashboard” butona tıklayarak işleme devam edebilirsiniz.

The screenshot shows the Publons website interface. At the top, there is a navigation bar with the 'publons' logo. Below it, a search bar contains the text 'Web of Science ResearcherID: V-9577-2018'. The main content area is titled 'Let's get started by updating your publication list'. It includes a paragraph explaining that the system has searched for publications and encourages the user to click a blue button to see results. A blue button labeled 'UPDATE MY PUBLICATION LIST' is visible. Below it, a grey button labeled 'TAKE ME TO MY DASHBOARD' is highlighted with a red rectangular box. To the right, there is a 'ResearcherID' summary box containing the following information:

ResearcherID	
Your ResearcherID	V-9577-2018
Number of publications	13
Web of Science - times cited	154
Most recent publication	<i>The impact of internet use on air pollution: Evidence from emerging countries, 2018</i>

10. Adım Yayın Tanımlama: Sağ üst köşede Researcher ID'nizi görebilirsiniz. Web of Science'da yer alan yayınlarınızı Researcher ID'nize (Publons profilinize) tanımlamak için sol tarafta “My records” altındaki “Publications” butonuna tıklayınız. Açılan sayfada “Import from Web of Science” altındaki “See My Web of Science Publications” tıklayınca sistem sizin soyad, adınız ile yayın taraması yaparak ilgili sonuçları ekrana getirir.



Batman Üniversitesi
Kütüphane ve Dokümantasyon Daire Başkanlığı

11.Adım Researcher ID Temini: Researcher ID profili, Publons Profili olarak değişmeden önce alınan Researcher ID'ler sağ üst köşede görüntülenmektedir. Daha önceden Researcher ID almayan araştırmacılar Publications bölümünden kendilerine ait en az bir yayını seçerek profillerine tanımlamaları gerekmektedir. 2-3 gün sonra sistem otomatik olarak Researcher ID oluşturacaktır. Researcher ID'ye yayınlarınızı tanımlamak için size ait olan yayın(ları) seçerek “Import Selected Publications” tıklayınız.



Batman Üniversitesi
Kütüphane ve Dokümantasyon Daire Başkanlığı

12. Adım: Yayın listenizi görmek için **“Continue to Your Publications List”** tıklayarak devam edebilirsiniz.

BO Private dashboard - Publication suggestions Web of Science ResearcherID V-9577-2018

Me
Dashboard summary
Public profile
Export verified record

My records
Publications
Suggestions
Peer reviews
Editor records
Awards

Activity
Notifications (1)
Pending records

Community
Refer colleagues
Scored publications
Followed publications
Endorsements

Your publications are importing. While you wait...
Our Web of Science search detected a few more publications that may be yours.

Are these your publications? Powered by the Web of Science

DATE	TITLE	JOURNAL/CONFERENCE
That is all the suggestions we have for now. We'll contact you if we detect more.		

CONTINUE TO YOUR PUBLICATION LIST

13. Adım: Yayın listeniz ekrana gelecektir. Yanlışlıkla eklenen/size ait olmayan yayınlar var ise sağ tarafta bulunan **çöp kutusunu çift tıklayarak** silebilirsiniz.

BO Private dashboard - My publications Web of Science ResearcherID V-9577-2018

Me
Dashboard summary
Public profile
Export verified record

My records
Publications
Peer reviews
Editor records
Awards

Activity
Notifications (1)
Pending records

Community
Refer colleagues
Scored publications
Followed publications
Endorsements
Researcher Badge

Settings
Account
Profile
Affiliations
Email
Permissions

Tip: See how your records look on your profile
Researchers, administrators, journal editors and more can discover your profile on Publons. Click below to see what they see.
SEE YOUR PUBLIC PROFILE

IMPORT PUBLICATIONS
Use this page to control the publications that will display on your public profile, downloadable record, and in the graphs and metrics here on your dashboard. Learn more about your publications on Publons.

DATE	TITLE	JOURNAL	CITATIONS	ALTMETRIC
2019	Analyzing long lasting effects of environmental polici...	Sustainable Cities and So...	3	
2018	The impact of internet use on air pollution: Evidence fr...	Environmental Science an...	4	
2018	Information and communications technology (ICT) an...	Eurasian Economic Review	0	
2018	A revisit of the environmental Kuznets curve hypothes...	Environmental Science an...	0	
2017	Are Turkey's tourism markets converging? Evidence fr...	Current Issues in Tourism	3	
2016	Nuclear Energy-Economic Growth Nexus in OECD Cou...	ATW - Internationale Zeits...	0	
2016	Health Care Convergence Analysis in Turkey on the Pr...	5TH ISTANBUL CONFERE...	0	
2016	A new approach to energy consumption per capita ste...	Renewable and Sustainab...	6	
2015	Analysis of Exchange Rate Pass Through with Asym...	Eskisehir Osmangazi Univ...	0	

14. Adım: Sol tarafta yer alan **“Settings”** altındaki **“Affiliations”** kısmında Intitution **“Batman University”** ve Department kısmına kendi bölümünüzü İngilizce olarak kısaltma yapmadan yazmanız Batman Üniversitesi altında listelenmeniz açısından son derece önem taşımaktadır.

“Settings” altında yer alan **“Account”** bölümünde **“ORCID – Connect”** tıklayarak ORCID ID'nizin Publons profilinizde görünmesini sağlayabilirsiniz.



Batman Üniversitesi Kütüphane ve Dokümantasyon Daire Başkanlığı

Notifications
Pending records

Community
Refer colleagues
Scored publications
Followed publications
Endorsements

Settings

ACCOUNT
Affiliations
Permissions

Institution affiliations

Universities and Academic Institutions you have been affiliated with. These are displayed on your profile and are used in Institution Leaderboard calculations.

INSTITUTION	DEPARTMENT	ROLE	URL	START	END		
Batman University	Library	Librarian	URL	2014	Present		

ADD ANOTHER

Other affiliations

Other sites and accounts you would like linked from your Publons profile eg. ResearchGate, LinkedIn

NAME	URL		
Name	URL		

ADD AFFILIATION

SAVE CHANGES

Web of Science Ana Sayfasından Researcher ID'ye Yayın Tanımlama Nasıl Yapılır?

Bir diğer yayın tanımlama işlemi de Web of Science Platformu ara yüzünden yapılabilir. Yazar adından tarama yapıldığında ekrana gelen yayınınızın başındaki kutucuğu tıklayınız. "EXPORT" altında yer alan "Claim on Publons – track citations" tıklayınız.

Web of Science

Clarivate Analytics

Search

Tools Searchers and alerts Search History Marked List

Results: 854
(from Web of Science Core Collection)

You searched for: ORGANIZATION-ENHANCED: (Batman university)
...More

Create an alert

Refine Results

Search within results for...

Filter results by:

Open Access (18)

Refine

Publication Years

2020 (9)

2019 (10)

2018 (10)

2017 (10)

2016 (9)

more options / values...

Refine

Web of Science Categories

ENERGY FUELS (12)

ENGINEERING ELECTRICAL

Sort by: Date Times Cited Usage Count Relevance More

Select Page Export Add to Marked List

1. ANN n param Excel
By: Isc
FUEL
View
InCites
Print
Email
Fast 5K
ENERGY Volume: 207 Article Number: 118300 Published: SEP 15 2020
View Abstract

2. Performa
By: Er
ENERGY Volume: 207 Article Number: 118300 Published: SEP 15 2020
View Abstract

3. Distance measurements and origin levels of the coeliac trunk, superior mesenteric artery, and inferior mesenteric artery by multiple-detector computed tomography angiography
By: Ekingen, Arzu; Hatipoğlu, Eyüp Savaş; Hamidi, Cihad
ANATOMICAL SCIENCE INTERNATIONAL
Early Access: SEP 2020
View Abstract

4. Synthesis, characterization, and antioxidant activity of heterocyclic Schiff bases
By: Kizilçaya, Hakan; Dağ, Basir; Aral, Tarik; et al.
JOURNAL OF THE CHINESE CHEMICAL SOCIETY
Early Access: SEP 2020
View Abstract

Analyze Results
Create Citation Report

Times Cited: 0
(from Web of Science Core Collection)
Usage Count

Times Cited: 0
(from Web of Science Core Collection)
Usage Count

Times Cited: 0
(from Web of Science Core Collection)
Usage Count

Times Cited: 0
(from Web of Science Core Collection)
Usage Count



Batman Üniversitesi
Kütüphane ve Dokümantasyon Daire Başkanlığı

Publons'a aktarmak için kaç yayın seçmişseniz uyarı verir. “**Export**“, ardından “**Tamam**” seçiniz. “**Tamam**” ı tıklayarak yayınların size ait olduğunu onaylamış olursunuz.

Export Records to Publons

You have selected 2 results for export

All records on page

Records from: 1 to 500

No more than 500 records at a time.

Cancel **Export**

apps.webofknowledge.com web sitesinin mesajı

By clicking OK, I certify that I have authored the selected publication(s) or I have been authorized to administer the author's profile

Tamam İptal

Bu noktadan sonra Publons sayfasına geçiş yapacaksınız. Web of Science'den aktarım işlemini onaylamanız için “**Begin import**”u seçiniz.

Confirm your Web of Science import

Click the button below to import your records.

BEGIN IMPORT

My record- publications bölümü ekrana gelerek ana sayfada eklediğiniz yayınları görebilirsiniz.

Dashboard summary
Public profile
Export Publons CV
Citation map

My records
> Publications

Peer reviews
Editor records

Activity
Notifications
Pending records

Community
Refer colleagues
Scored publications
Followed publications
Endorsements
ResearcherID badge

Settings
Account
Profile
Affiliations
Email
Permissions

Tip: See how your records look on your profile
Researchers, administrators, journal editors and more can discover your profile on Publons. Click below to see what they see.

SEE YOUR PUBLIC PROFILE

IMPORT PUBLICATIONS FOUND 0 WEB OF SCIENCE PUBLICATIONS

Click the button above to import your publications from Web of Science, ORCID, and more. You can then use this page to monitor and manage the publications that will display on your public profile, Publons CV, and in the graphs and metrics here on your dashboard. Learn more about your publications on Publons.

HIDE FILTERS CLEAR ALL

Title Journals

Author name DURING PERIOD Start to End

Web of Science Core Collection only CITATIONS 0 to ∞

Showing 2 publications with 0 citations from the Web of Science Core collection

Year	Title	Journal	Citations	Actions
2020-11	ANN modeling for justification of thermodynamic ana...	Fuel	0	-
2020-09	Performance, emission and combustion characteristi...	Energy	0	-

No more results.